



SKORYDOV XBRL STEP-BY-STEP FILING GUIDANCE

**Skorydov Systems Private Limited
708, Tulsiani Chambers,
Nariman Point,
Mumbai-400021
E-mail: xbri@skorydov.com**

Skorydov

Visit and create an account or login at stacos.com

STACOS

Skorydov Tax And Compliance Office Solutions

Skorydov Tax and Compliance Office Solutions (STACOS) is a tax and compliance solutions for Individuals, Families, Corporate and Professionals. STACOS is a project built on the idea to make the ever increasing tax and compliance headache a thing of the past. We plan to bring applications (apps) related to tax, compliance and legal under one domain that you, your organisation or family can use and share data and apps. As apps are introduced, you will find that they are easy to use and very intuitive.

We are working on more modules and welcome any suggestions from you side.

Reliable, secure web-based apps & tools for you

STACOS offers simple, powerful tax and compliance apps for individuals, families and businesses that increase productivity while reducing your overall costs - all hosted by Skorydov on secure, reliable infrastructure for a very affordable price. We offer a 99.9% uptime guarantee.

Productivity apps built to deliver results and improve efficiency

STACOS Apps allows you, your associates and employees to effectively work together in real-time on a shared platform - from anywhere - anytime. This enables collaboration, making your work related to tax, compliance and legal more productive and helps to increase efficiency.

With STACOS Apps you can:

- Access apps, data, content anywhere, anytime - laptop, desktop, home, work, mobile etc.

Login

Email

Password

[Forgot password?](#)

Login

New to STACOS?

Create an account

Click on XBRL Filing

STACOS

Skorydov Tax And Compliance Office Solutions

Group Names



Income-tax



XBRL Filing

Download Excel template as per your MS Office Version

STACOS

Skorydov Tax And Compliance Office Solutions

[My Orders](#) | [Logout](#)

XBRL ROC Filing

[Launch XSRF to XBRL Converter](#)

XBRL conversion and filing is live at STACOS and MCA.gov.in. Final Release version of MS Excel Sheet - ver 9.0 (released on 07/10/2011)

What is XBRL?

XBRL stands for eXtensible Business Reporting Language (XBRL) that will be widely used to enable the financial reporting process for both preparers and consumers. In simpler words, it is a revolutionary format for business (financial) reporting. A more advanced form of XML. (XML reporting is already being used by the Income-tax Department in India.)

Why XBRL?

The global XBRL movement has ushered in a new age of financial reporting. XBRL, often referred to as "Interactive Data", gives the financial community a standards-based method to prepare, publish, exchange, search, and analyse financial statements of both public and private concerns across all software formats and technologies. XBRL frees data from paper-based reports and allows it to flow seamlessly between XBRL-enabled software applications. It automates financial analysis. Computers can intelligently "read" an XBRL report to select specific data, pull it into documents and spread sheets, analyse it, exchange it with other computers, and present it in a variety of formats. XBRL data is more robust, accurate, and transparent than data in financial statements that appears in legacy electronic and paper reports. For investors and analysts, XBRL eliminates the time, labour, and errors. XBRL tags both numbers and textual information, which means not only balance statements, but information such as statement of principals. and Even footprints, appendices, and updates, is accounted for, to aid in internal audits and external research and analysis.

What is the MCA mandate?

The companies whose Balance Sheet date is 31.03.2011 or onwards, need to file their financial statements in XBRL provided they qualify the criteria laid as per Ministry's general Circular 37/2011 dated 07.06.2011. The following class of companies have to file the Financial Statements in XBRL Form from the year 2010-2011:-

- (i) All companies listed in India and their subsidiaries (Subsidiary of listed company are required to file in XBRL format, irrespective of its paid up capital.
- (ii) All companies having a paid up capital of Rs. 5 Crore and above or a Turnover of Rs 100 crore or above.

i.e about 28,000 companies have to file in XBRL format nota bene: XBRL filing is mandatory for companies which fall in the above mentioned criteria. It is optional for others. Recommendations: Use Skorydov's free XBRL tool for non-mandatory companies.

Price

For unlimited companies Rs. 10000.00

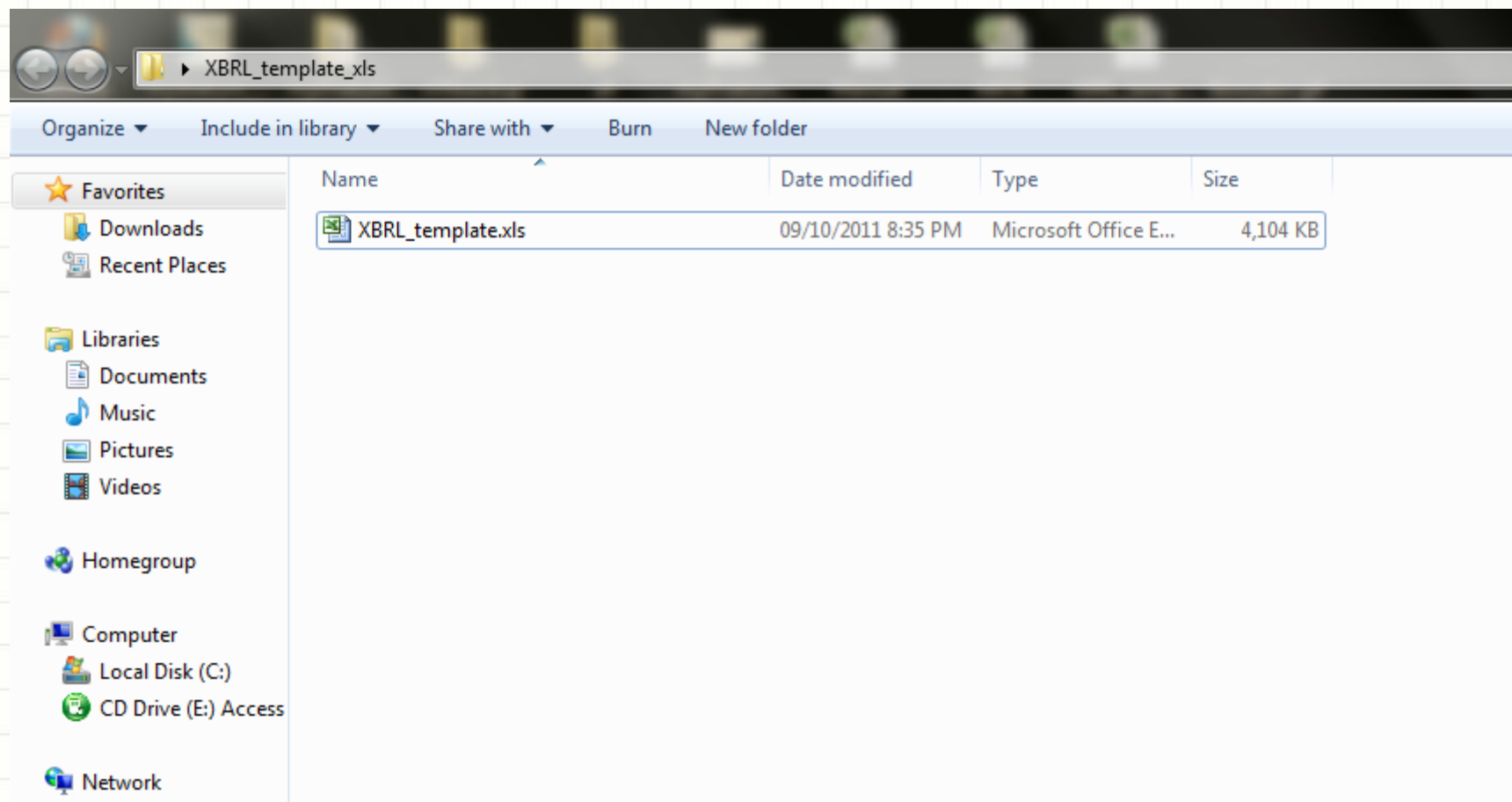
Downloads

- XBRL- Template (for data entry and conversion) [Download](#) (MS Excel 97 - 2007) Ver 9.1A (released on 9th October 2011)
- XBRL- Template (for data entry and conversion) [Download](#) (MS Excel 2010) Ver 9.1A (released on 9th October 2011)
- Outsourcing Model Write Up & Pricing [Download](#) (PDF File)

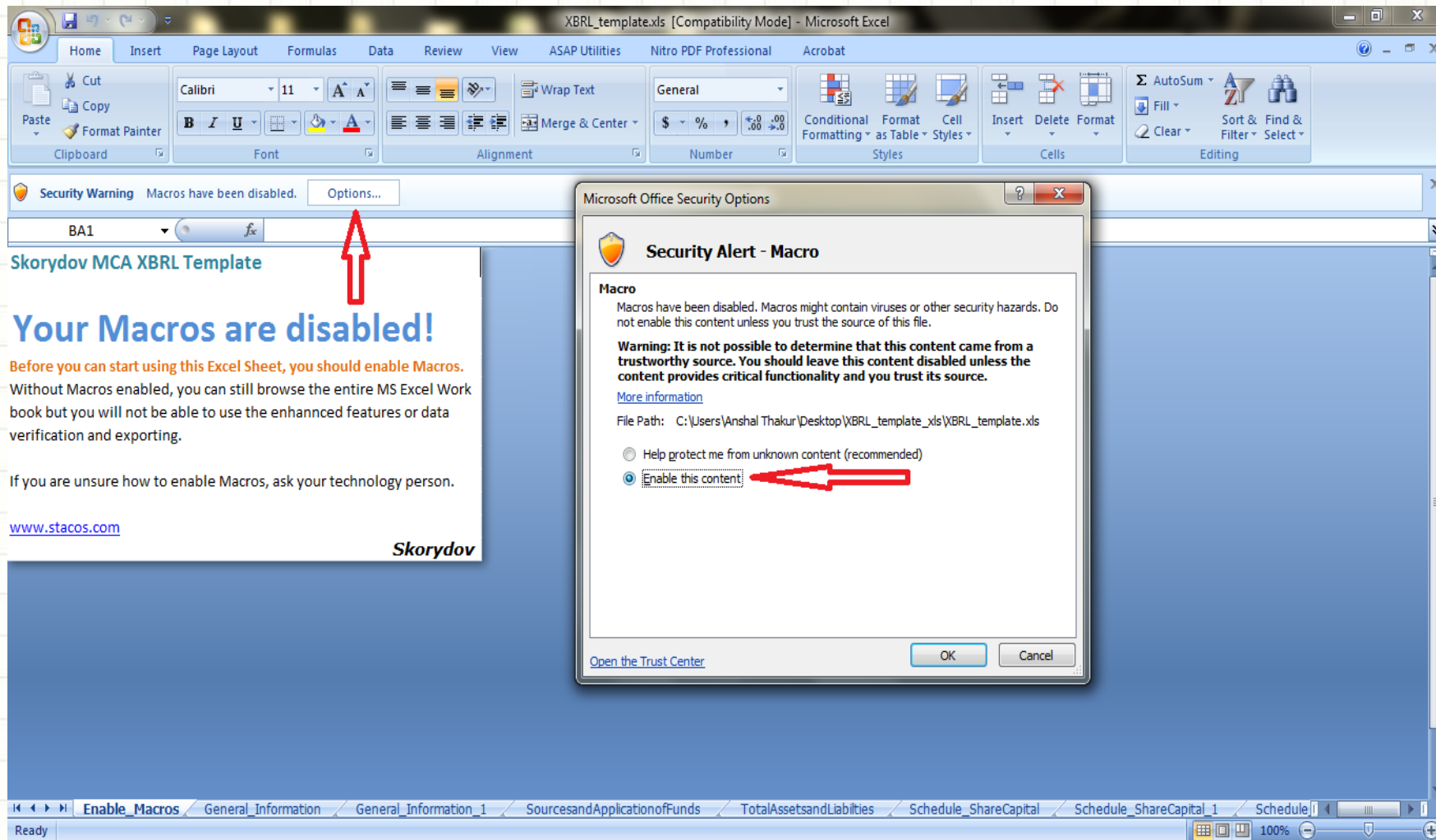
Useful links

- [Ministry of Corporate Affairs:](#)
- [ICAI- XBRL Website](#)

Unzip and save file in a safe location



Open excel template and ENABLE MACRO



Start filling in the details

XBRL_template.xls [Compatibility Mode] - Microsoft Excel

Home Insert Page Layout Formulas Data Review View ASAP Utilities Nitro PDF Professional Acrobat

Paste Cut Copy Format Painter Clipboard Font Alignment Number Styles

B15

	A	B	C	D
1	1. General information about financial statements			
2	[610000] - General information about financial statements (BS_PL)			
3	2010-11			
4	Disclosure of general information about company [abstract]			
5	Disclosure of company information [abstract]			
6	Name of company	Skorydov Systems Pvt. Ltd.	Enter simple text	
7	Corporate identity number	CIN100100100100		
8	Permanent account number of entity	AAAAA1111A	Enter PAN	
9	Address of registered office of company		Enter simple text	
10	Type of industry	Commercial and Industrial		
11	Disclosure of document information [abstract]			
12	Date of board meeting when final accounts were approved		Enter date	
13	Period covered by financial statements		Enter simple text	
14	Date of start of reporting period		Enter date	
15	Date of end of reporting period		Enter date	
16	Period covered by financial statements (for Previous Year)		Enter simple text	
17	Date of start of reporting period (for Previous Year)		Enter date	
18	Date of end of reporting period (for Previous Year)		Enter date	
19	Nature of report standalone consolidated		Select option	
20	Content of report	BalanceSheet and Profit_Loss		
21	Description of presentation currency	INR	Enter simple text	
22	Level of rounding used in financial statements		Select option	
23	Type of balance sheet		Select option	
24	Type of profit and loss statement		Select option	

Check and fill all “Mandatory Fields”

XBRL_template.xls [Compatibility Mode] - Microsoft Excel

Home Insert Page Layout Formulas Data Review View ASAP Utilities Nitro PDF Professional Acrobat

Mandatory Field

List of mandatory fields that you should enter. 136 record(s)

- Address of registered office of company
- Date of board meeting when final accounts were approved
- Date of start of reporting period
- Date of end of reporting period
- Date of start of reporting period (for Previous Year)
- Date of end of reporting period (for Previous Year)
- Nature of report standalone consolidated
- Type of balance sheet
- Type of profit and loss statement
- Type of cash flow statement

This is a mandatory field.

Show only Blank Cells

14. Schedule - Inventories
15. Schedule - Other current assets
16. Schedule - Loans and advances
17. Schedule - Current liabilities
18. Schedule - Provisions
19. Schedule - Miscellaneous Expenditure Not V

Double Click to jump directly and close this form.

Developed by Skorydov for MCA Taxonomy
(c) 2011 Skorydov

Report an issue / suggestion to us!

Enter Data and FootNotes
Enter Data in relevant sheets listed on the left and enter FootNotes wherever necessary. If you wish to port data from an earlier version, then click this link: [Import Data from Earlier Version](#)

Show Comments / Footnotes

Check Mandatory Fields

Verify Active Cell

Verify This Sheet

Verify All sheets at once

Export and Convert to XBRL:
After entering and verifying data in step 3 above, click the button 'Click to Export to XSRF' below. This will create a Xtended Secured Return Format (XSRF) file. Upload the XSRF file on the website <http://www.stacos.com>. Stacos.com will create your XBRL and you can download the XBRL for filing with MCA.

Click to Export to XSRF

Step 5: Validate XBRL using MCA validator:
5 After downloading the XBRL file from step 4 above, validate the XBRL file using the MCA validator. (MCA Validator can be downloaded from stacos.com or mca.gov.in) The validator will check for any errors remaining before filing with the MCA. If the validator gives a list of errors then paste the errors in the 'Error Locator' below to locate and correct errors.

Error Locator...

Right click on the Excel sheet to show this form. again

[Click here to Unprotect Sheets](#)

Skorydov

General Information	General Information_1	SourcesandApplicationofFunds	TotalAssetsandLiabilities	Schedule_ShareCapital	Schedule_ShareCapital_1	Schedule_ShareCapital_2
1						
2						
3						
4	Sources application funds [abstract]					
5	Sources of funds [abstract]					
6	Shareholders' funds [abstract]					
7	Paid-up share capital					
8	Reserves surplus					
9	Equity share warrants					
10	Shareholder's funds					
11	Share application money pending					
12	Equity share capital pending					
13	Preference share capital pending					
14	Securities premium pending					
15	Share application money pending					
16	Minority interests, net					
17	Net deferred tax liability					
18	Loan funds [abstract]					
19	Secured loans					
20	Unsecured loans					
21	Loan funds		0	0		
22	Other liabilities					
23	Sources of funds		0	0		
24	Application of funds [abstract]					
25	Goodwill on consolidation [abstract]					

Enter Comments/Footnotes as required

56. Disclosures - Directors report

FootNote / Comment

FootNote for this Sheet:

FootNote for Cell:

Notes Notes Notes
Notes Notes Notes
Notes Notes notes

Clear Text Above Save

Balance Sheet and Profit & Loss- [Version:2011-9.1-A]

Guid for Balance Sheet and Profit & Loss [2010-11]

Report an issue / suggestion to us!

Delete all Worksheets below:

the sheet you wish to go to:

Information about financial statements and Application of Funds
Assets and Liabilities
Schedule - Share capital
Schedule - Fixed assets
Schedule - Fixed assets, net-gross classification
Schedule - Reserves and Surplus
Schedule - Reserves and Surplus [Summary]
Schedule - Secured debt
Schedule - Unsecured debt
Schedule - Investments
Schedule - Sundry debtors
Schedule - Cash and bank balances
Schedule - Inventories
Schedule - Other current assets
Schedule - Loans and advances
Schedule - Current liabilities
Schedule - Provisions
Schedule - Miscellaneous Expenditure Not V

Double Click to jump directly and close this form.

Developed by Skorydov for MCA Taxonomy
(c) 2011 Skorydov

Step 2: Enter Data and FootNotes
Enter Data in relevant sheets listed on the left and enter FootNotes wherever necessary. If you wish to Import data from an earlier version, then click this link: [Import Data from Earlier Version](#)

2 Show Comments / Footnotes Check Mandatory Fields

Step 3: Verify Data.

3 Verify Active Cell Verify This Sheet Verify All sheets at once

Step 4: Export and Convert to XBRL:
After entering and verifying data in step 3 above, click the button 'Click to Export to XSRF' below. This will generate a Xtended Secured Return Format (XSRF) file. Upload the XSRF file on the website <http://www.stacos.com>. Stacos.com will create your XBRL and you can download the XBRL for filing with MCA.

4 Click to Export to XSRF

Step 5: Validate XBRL using MCA validator:
After downloading the XBRL file from step 4 above, validate the XBRL file using the MCA validator. (MCA Validator can be downloaded from stacos.com or mca.gov.in) The validator will check for any errors remaining before filing with the MCA. If the validator gives a list of errors then paste the errors in the 'Error Locator' below to locate and correct errors.

5 Error Locator...

Right click on the Excel sheet to show this form. again

[Click here to Unprotect Sheets](#)

Skorydov

General Information General Information 1 Sources and Application of Funds Total Assets and Liabilities Schedule - Share Capital Schedule - Share Capital 1 Schedule - Share Capital 2

Verify all details entered

Skorydov XBRL-Balance Sheet and Profit & Loss- [Version:2011-9.1-A]

This format is valid for Balance Sheet and Profit & Loss [2010-11] [Report an issue / suggestion to us!](#)

Step 1: Complete all Worksheets below:

1 Select the sheet you wish to go to:

- 1. General information about financial statement
- 2. Sources and Application of Funds
- 3. Total Assets and Liabilities
- 4. Schedule - Share capital
- 5. Schedule - Fixed assets
- 6. Schedule - Fixed assets, net-gross classification
- 7. Schedule - Reserves and Surplus
- 8. Schedule - Reserves and Surplus [Summary]
- 9. Schedule - Reserves and Surplus

Step 2: Enter Data and FootNotes

2 Enter Data in relevant sheets listed on the left and enter FootNotes wherever necessary. If you wish to Import data from an earlier version, then click this link: [Import Data from Earlier Version](#)

Show Comments / Footnotes Check Mandatory Fields

Step 3: Verify Data.

3 Verify Active Cell Verify This Sheet **1** **Verify All sheets at once**

XBRL_template.xls

? Do you wish to start verification of data? You can stop verification at any time by pressing the Ctrl+ Break button on your keyboard.

2 Yes No

XBRL:

By clicking data in step 3 above, click the button 'Click to Export to XSRF' below. This will create a Return Format (XSRF) file. Upload the XSRF file on the website. Stacos.com will create your XBRL and you can filing with MCA.

Click to Export to XSRF

MCA validator:

By clicking data in step 4 above, validate the XBRL file using the MCA validator. (MCA added from stacos.com or mca.gov.in) The validator will check for any errors with the MCA. Locate and

3 Please wait while the process is over [Skorydov XBRL]

0 error(s) found

7 %

Verifying - Schedule - Fixed assets

Export to XSRF

Font Alignment Number Styles Cells Ed

Skorydov XBRL-Balance Sheet and Profit & Loss- [Version:2011-9.1-A]

This format is valid for Balance Sheet and Profit & Loss [2010-11] [Report an issue / suggestion to us!](#)

Step 1: Complete all Worksheets below:

1 Select the sheet you wish to go to:

- 1. General information about financial statement
- 2. Sources and Application of Funds
- 3. Total Assets and Liabilities
- 4. Schedule - Share capital
- 5. Schedule - Fixed assets
- 6. Schedule - Fixed assets, net-gross classification
- 7. Schedule - Reserves and Surplus
- 8. Schedule - Reserves and Surplus [Summary]
- 9. Schedule - Sec
- 10. Schedule - Un
- 11. Schedule - Inv
- 12. Schedule - Su
- 13. Schedule - Ca
- 14. Schedule - Inv
- 15. Schedule - Ot
- 16. Schedule - Lo
- 17. Schedule - Cu
- 18. Schedule - Pro
- 19. Schedule - Mis

Step 2: Enter Data and FootNotes

2 Enter Data in relevant sheets listed on the left and enter FootNotes wherever necessary. If you wish to Import data from an earlier version, then click this link: [Import Data from Earlier Version](#)

Show Comments / Footnotes Check Mandatory Fields

Step 3: Verify Data.

3 Verify Active Cell Verify This Sheet Verify All sheets at once

XBRL_template.xls

1 Do you wish to start exporting of data? You can stop exporting at any time by pressing the Ctrl+Break button on your keyboard.

2 OK Cancel

Click the button 'Click to Export to XSRF' below. This will... Upload the XSRF file on the website... XBRL and you can

1 Click to Export to XSRF

validate the XBRL file using the MCA validator. (MCA.gov.in) The validator will check for any errors... gives a list of errors then paste the errors in the

Error Locator...

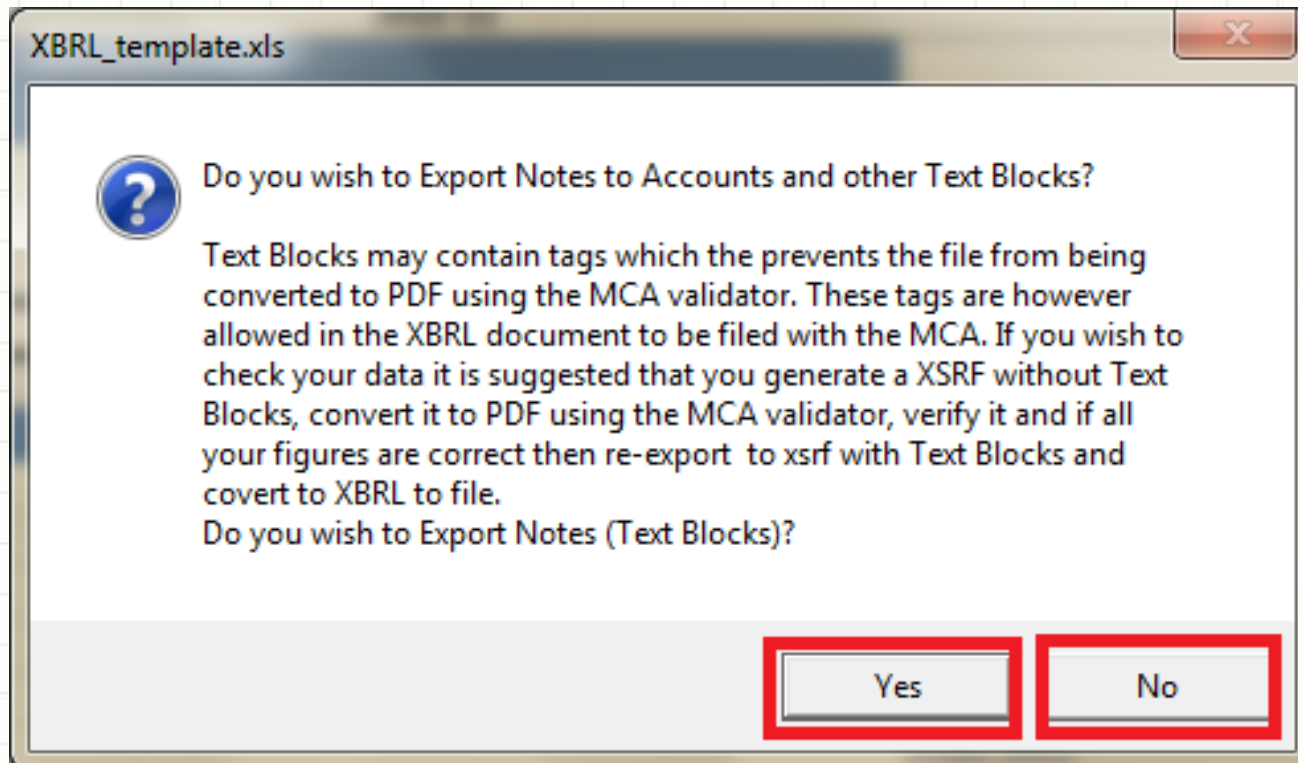
Double Click to j... Right click on the Excel sheet to show this form. again

Developed by Skorydov for MCA Taxonomy
(c) 2011 Skorydov

[Click here to Unprotect Sheets](#)

Skorydov

Select Yes/No to export XSRF with/without Notes



XSRF Saved

[C:\Skorydov_XBRL_MCA\XSRF2011\...]

The screenshot shows the Microsoft Excel interface with the file 'XBRL_template.xls' open in Compatibility Mode. The ribbon includes tabs for Home, Insert, Page Layout, Formulas, Data, Review, View, ASAP Utilities, Nitro PDF Professional, and Acrobat. The 'Home' tab is active, showing options for Clipboard, Font, Alignment, Number, Styles, and Cells. The spreadsheet content is as follows:

	A	B	C	D
1	57. Disclosures - Signatories of balance sheet			
2	<i>[640000] - Disclosures - Signatories of balance sheet (BS)</i>			
3	2010-11			
4	Details of signatories of balance sheet [abstract]			
5	Details of directors signing balance sheet [abstract]			
6	Details of directors signing balance sheet Click here			
7	Details of company secretary [abstract]			
8	Name of company secretary			
9	Permanent account number of company secretary			
10	Date of signing of balance sheet by company secretary			
11	Details of manager signing balance sheet [abstract]			
12	Details of manager signing balance sheet Click here			

A dialog box titled 'XBRL_template.xls' is displayed in the foreground, containing the following text:

Finished Exporting to XSRF format.
Location of XSRF file:
C:\Skorydov_XBRL_MCA\XSRF2011\[NoNotes]-[Skorydov Systems Pvt. Ltd.].xsrf

The 'OK' button in the dialog box is highlighted with a red rectangle.

Visit your STACOS : XBRL login and click “Launch XSRF to XBRL Converter”

STACOS

Skorydov Tax And Compliance Office Solutions

My Orders | Logout

XBRL ROC Filing

XBRL conversion and filing is live at STACOS and MCA.gov.in. Final Release version of MS Excel.

What is XBRL?

XBRL stands for eXtensible Business Reporting Language (XBRL) that will be widely used to enable simpler words, it is a revolutionary format for business (financial) reporting. A more advanced format Department in India.)

Why XBRL?

The global XBRL movement has ushered in a new age of financial reporting. XBRL, often referred to as "Interactive Data", gives the financial community a standards-based method to prepare, publish, exchange, search, and analyse financial statements of both public and private concerns across all software formats and technologies. XBRL frees data from paper-based reports and allows it to flow seamlessly between XBRL-enabled software applications. It automates financial analysis. Computers can intelligently "read" an XBRL report to select specific data, pull it into documents and spread sheets, analyse it, exchange it with other computers, and present it in a variety of formats. XBRL data is more robust, accurate, and transparent than data in financial statements that appears in legacy electronic and paper reports. For investors and analysts, XBRL eliminates the time, labour, and errors. XBRL tags both numbers and textual information, which means not only balance statements, but information such as statement of principals. and Even footprints, appendices, and updates, is accounted for, to aid in internal audits and external research and analysis.

What is the MCA mandate?

The companies whose Balance Sheet date is 31.03.2011 or onwards, need to file their financial statements in XBRL provided they qualify the criteria laid as per Ministry's general Circular 37/2011 dated 07.06.2011. The following class of companies have to file the Financial Statements in XBRL Form from the year 2010-2011:-

- (i) All companies listed in India and their subsidiaries (Subsidiary of listed company are required to file in XBRL format, irrespective of its paid up capital.
- (ii) All companies having a paid up capital of Rs. 5 Crore and above or a Turnover of Rs 100 crore or above.

1

Launch XSRF to XBRL Converter

Price

For unlimited companies Rs. 10000.00

Downloads

- XBRL- Template (for data entry and conversion) [Download](#) (MS Excel 97 - 2007) Ver 9.1A [released on 9th October 2011]
- XBRL- Template (for data entry and conversion) [Download](#) (MS Excel 2010) Ver 9.1A [released on 9th October 2011]
- Outsourcing Model Write Up & Pricing [Download](#) (PDF File)

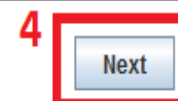
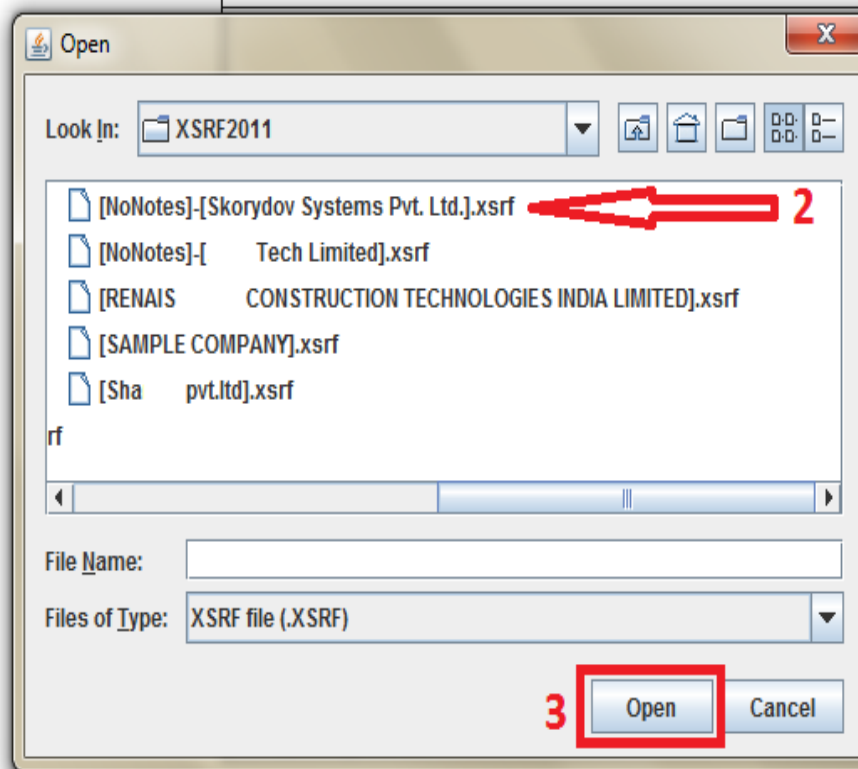
Useful links

- [Ministry of Corporate Affairs:](#)
- [ICAI - XBRL Website](#)

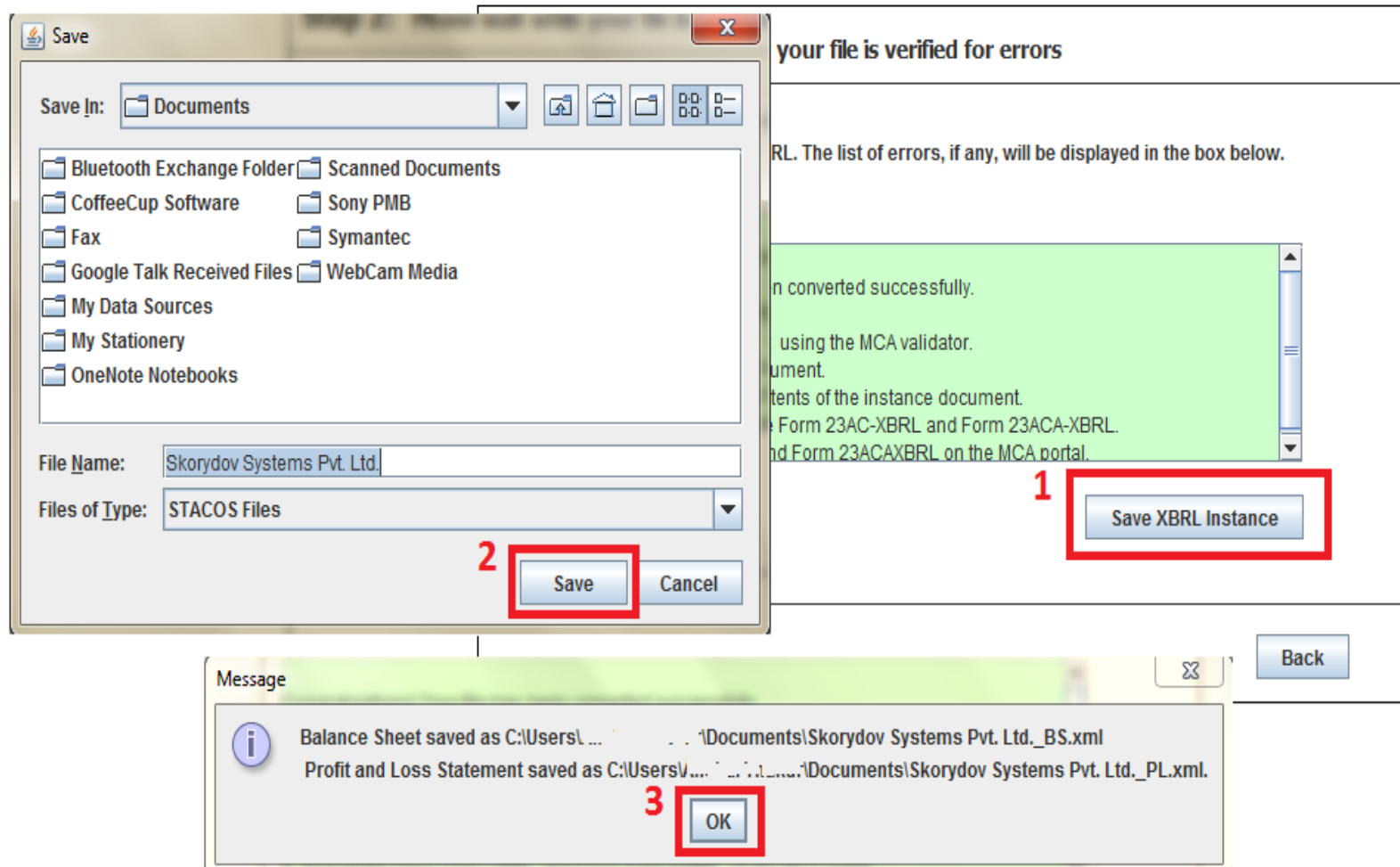
Select and Upload your XSRF file

Create XBRL file

Step 1: Please select and upload your XSRF file for year : 2010-11

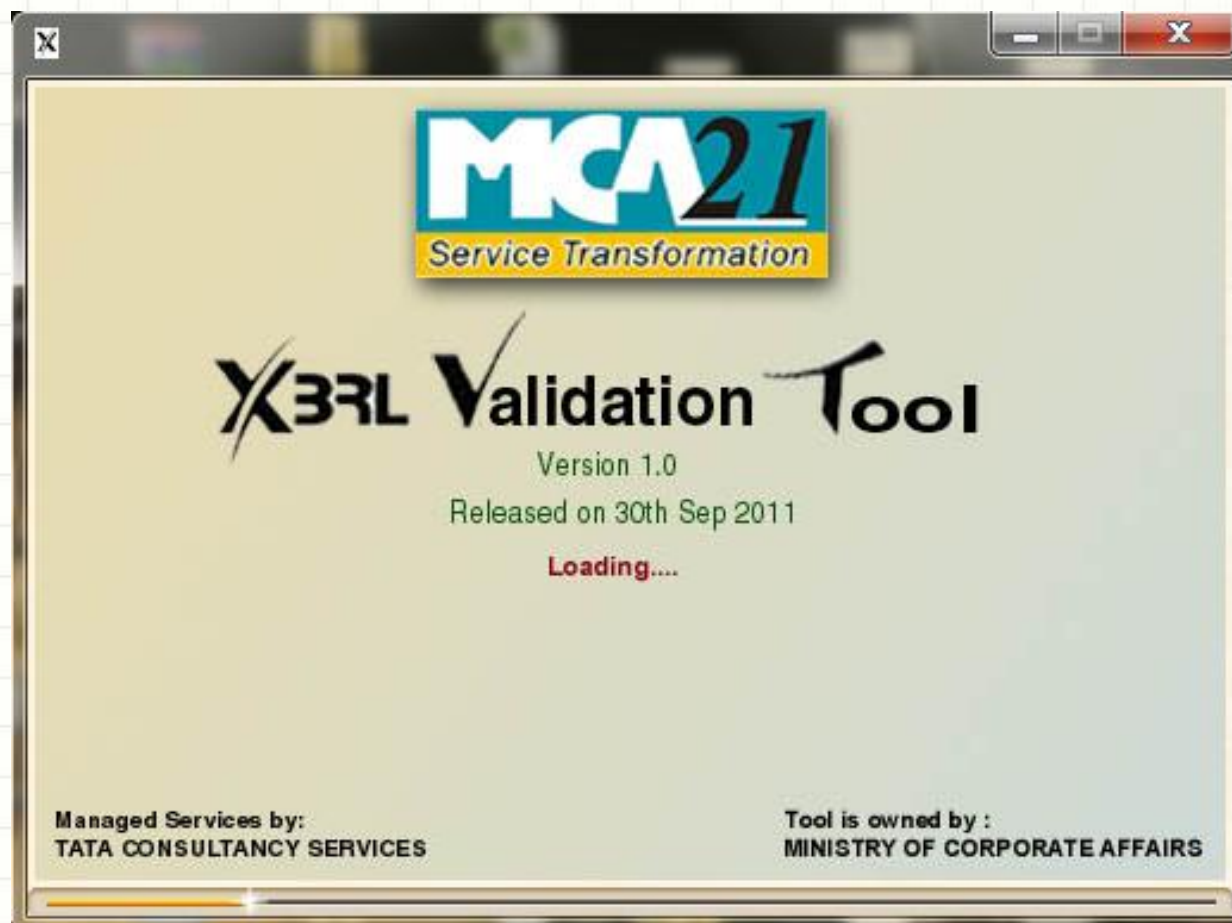


XBRL successfully generated. Save the instance document.

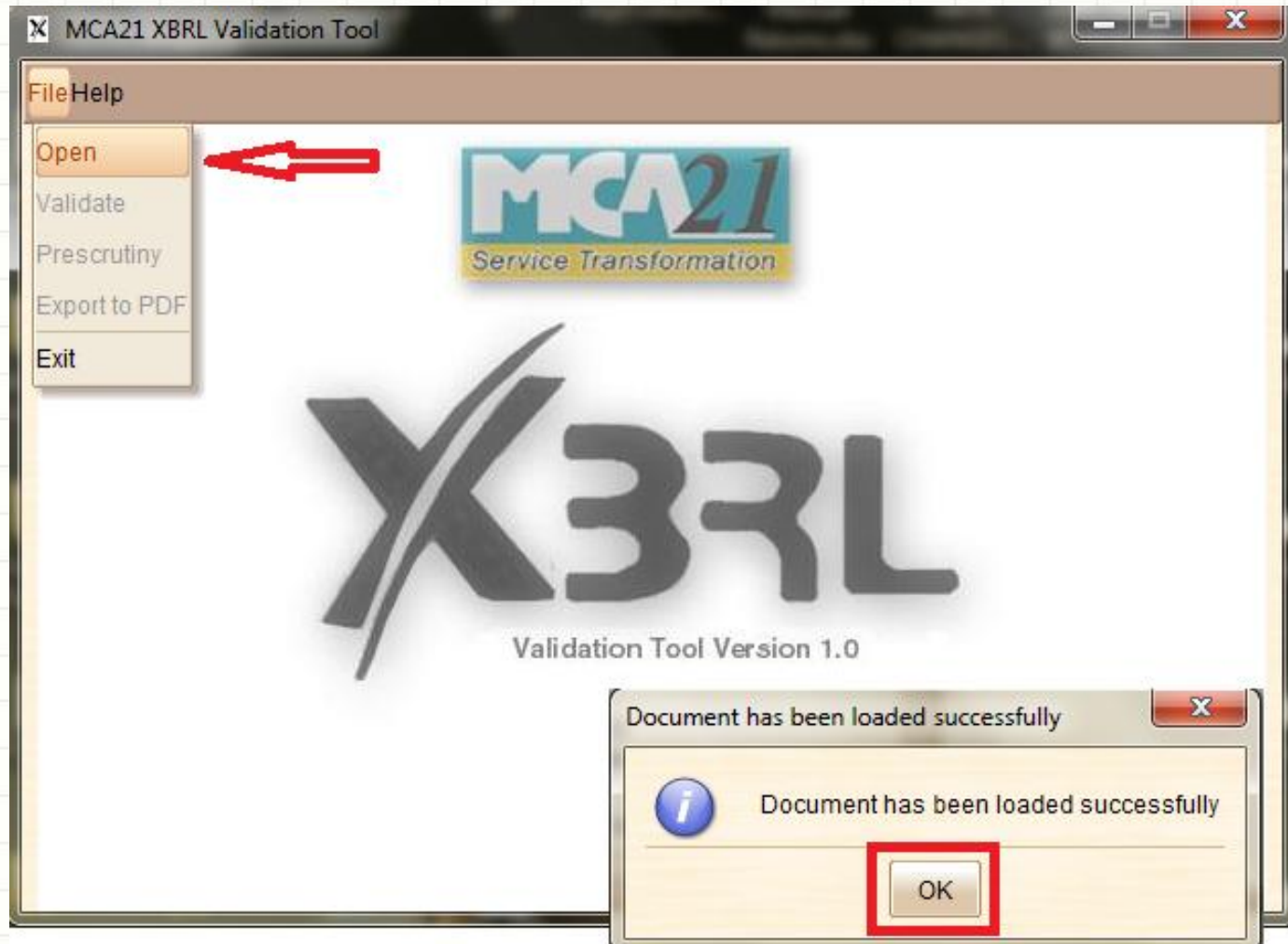


Start MCA Validation Tool

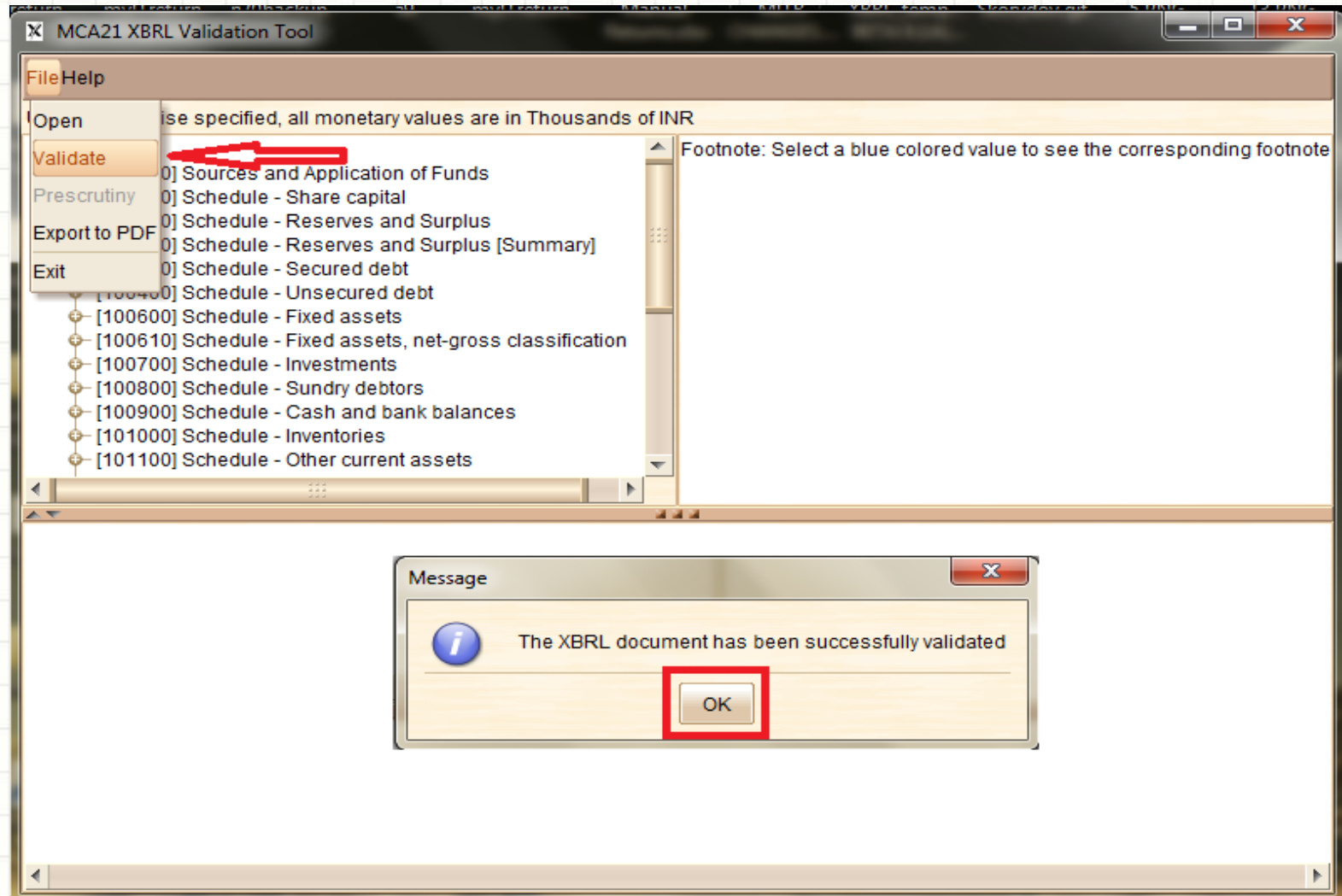
[http://xbrltool.mca.gov.in/XBRL/XBRL_TOOL/XBRLToolInst.zip]



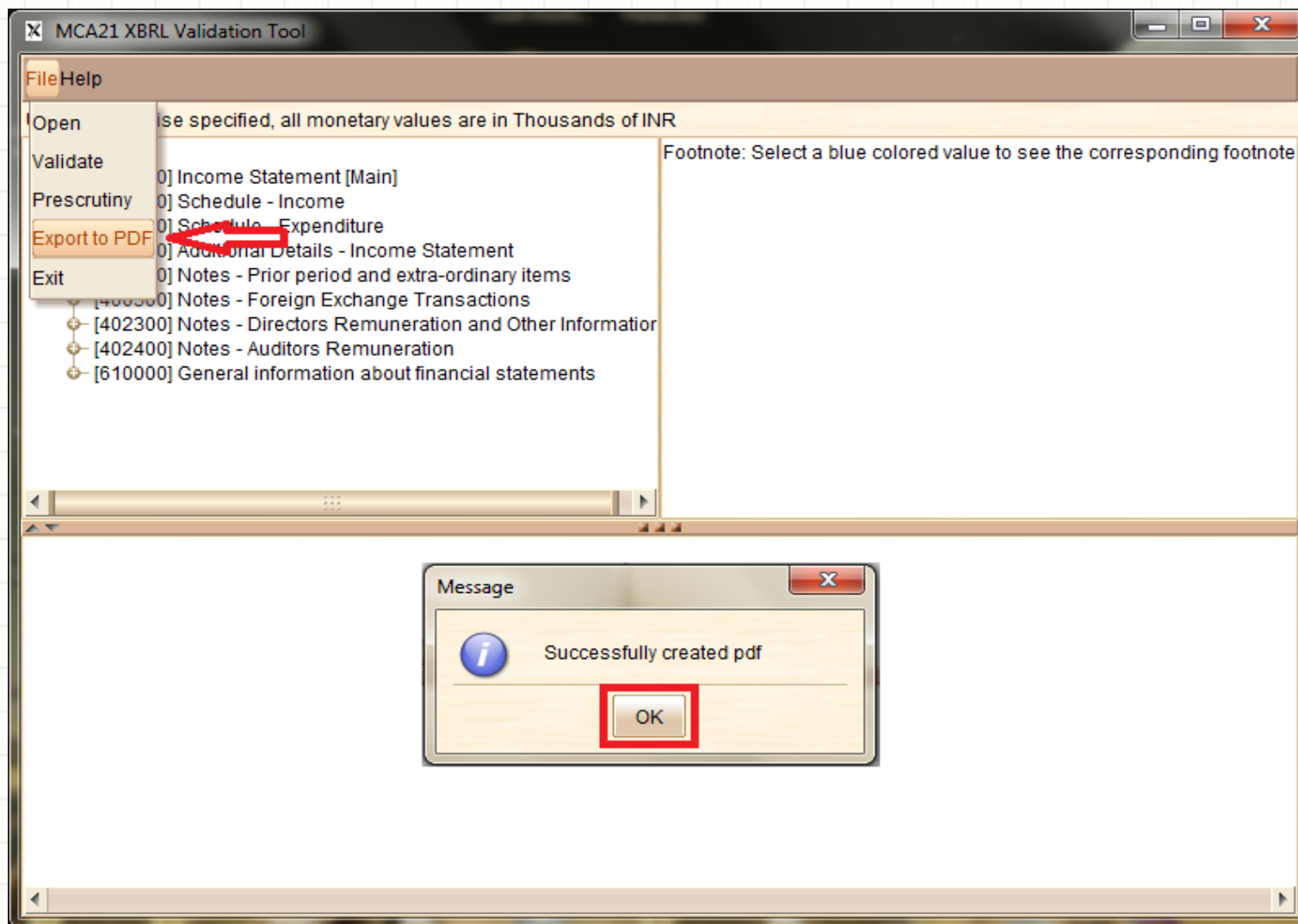
Browse and upload instance document from the tool



Validate the instance document with the validation tool



Export the instance document to PDF format



Verify the details in PDF with the details entered in excel template

Adobe Reader

File Edit View Window Help

5 / 7 139%

[200200] Schedule - Expenditure

Unless otherwise specified, all monetary values are in Thousands of INR

	01/04/2010 to 31/03/2011	01/04/2009 to 31/03/2010
Consumption materials changes inventories [abstract]		
Consumption materials changes inventories	231.187	22.699
Manufacturing service costs [abstract]		
Cost power fuel	1.83	0
Cost insurance	0	0
Manufacturing service costs	4.981	0.619
Employee related expenses [abstract]		
Staff welfare expenses	5.459	0
Training recruitment expenses	1.83	0.798
Employee related expenses	113.149	59.719
Administrative selling other expenses [abstract]		
Other expenditure	12.547	2.83
Administrative selling other expenses	108.675	47.167
Depreciation amortisation impairment [abstract]		
Depreciation amortisation impairment	8.165	0.933
Interest financial charges [abstract]		
Interest financial charges	0.987	0
Provision taxation [abstract]		
Provision current tax	0	0

E-filing procedure

Rest of the process is similar for everyone:

- There shall be a separate set of Form 23AC and Form 23ACA available on the MCA portal for filing in XBRL form. First fill up the Form 23AC and Form 23ACA. Thereafter, attach the validated and pre-scrutinised XBRL document for Balance sheet to Form 23AC. Similarly, the instance document for Profit and Loss account is to be attached to Form 23ACA. Separate instance documents need to be attached w.r.t. Standalone financial statements and consolidated financial statements.
- After the forms are filled, you are required to perform pre-scrutiny of the form, sign the form and then upload the same as per the normal e-Form filing process on MCA portal.

Thank You!

xbri@skorydov.com